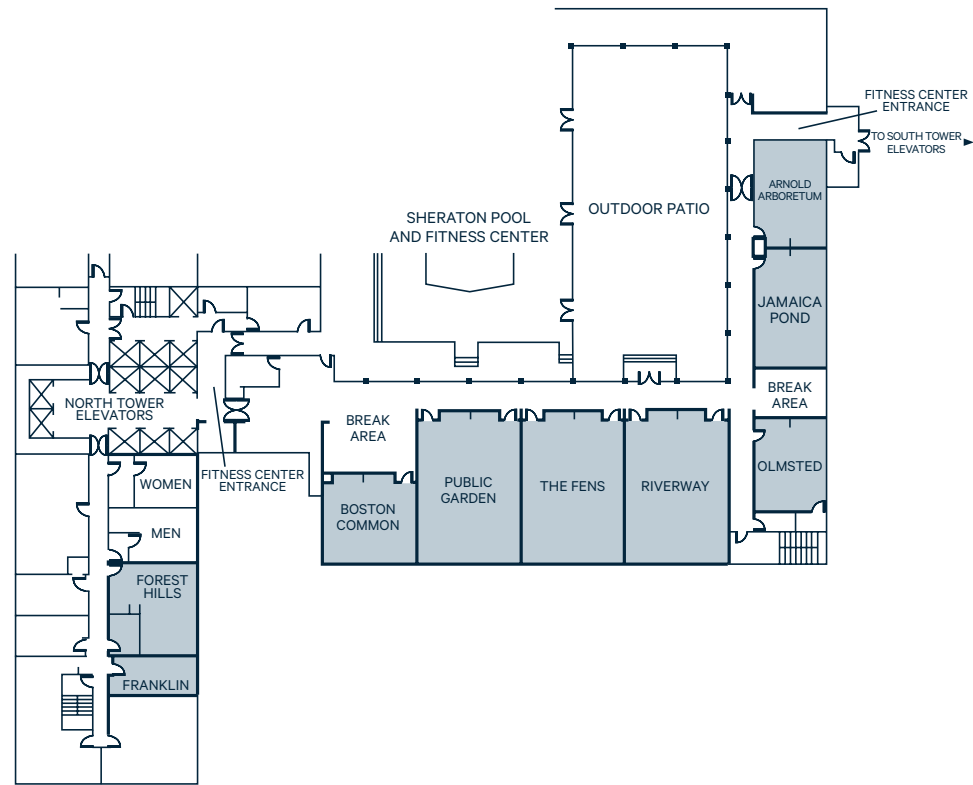


FIFTH FLOOR



**Sheraton**  
BOSTON HOTEL



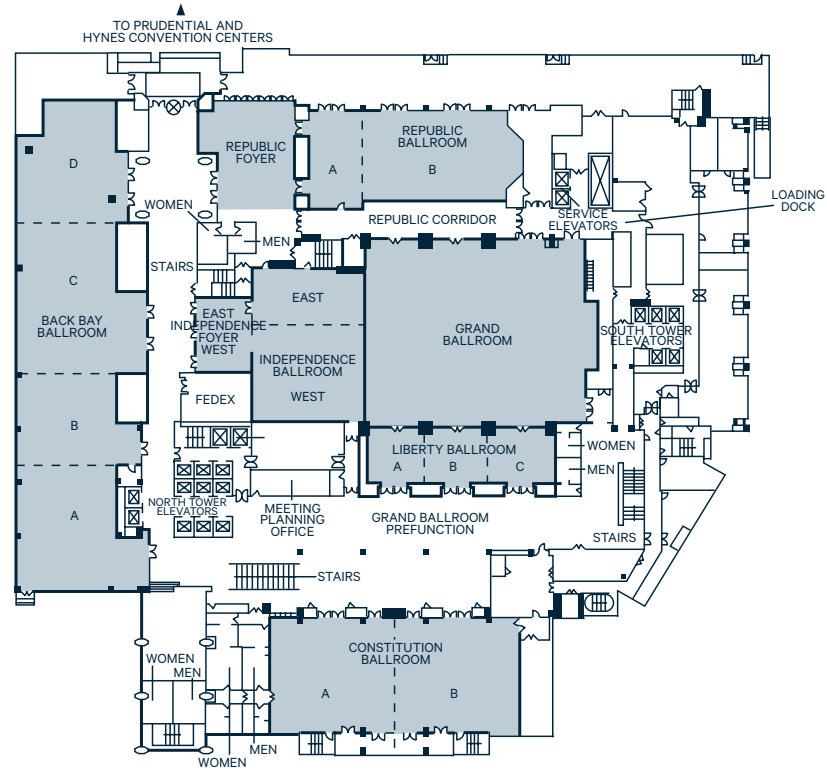
# Sheraton Boston Hotel

## Floor Plans & Capacity Charts

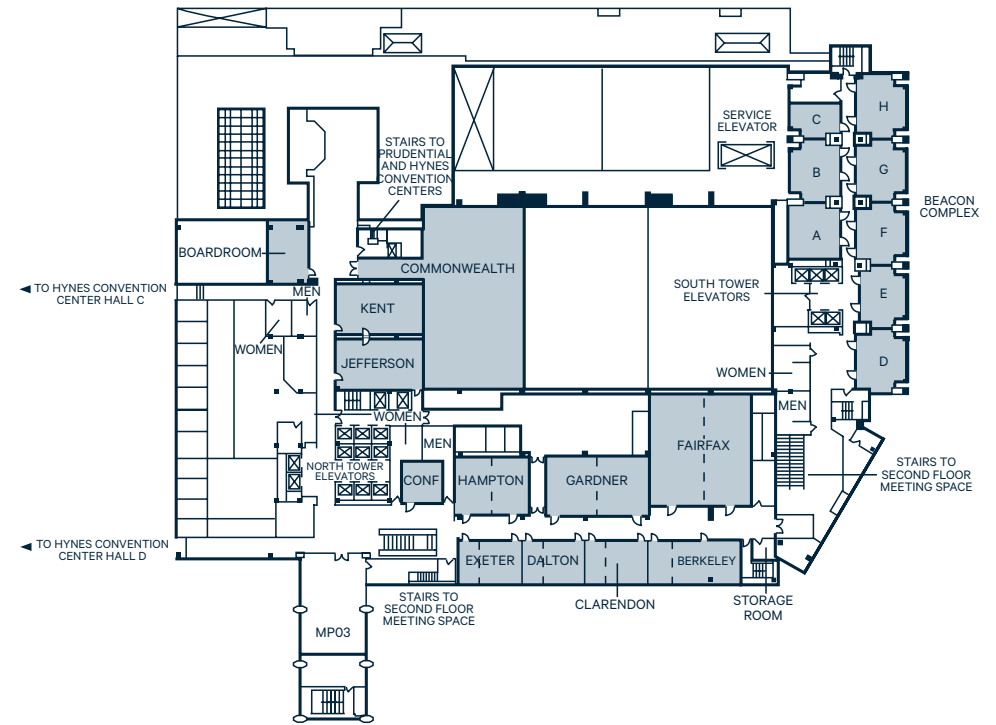
ROOM DIMENSIONS AND SEATING CAPACITY — FIFTH FLOOR

Room Name	Square Feet	Dimensions	Height	Pod	Theater	Reception	Classroom 3 per 6'	Classroom 2 per 6'	U-Shape	H-Square	Conference	Banquet Rounds of 10
BOSTON COMMON	702	26' x 27'	8'1"	24	50	35	24	12	14	20	18	40
PUBLIC GARDEN	1,276	29' x 44'	8'1"	54	126	80	56	40	28	38	24	72
THE FENS	1,276	29' x 44'	8'1"	54	126	80	56	40	28	38	24	72
RIVERWAY	1,276	29' x 44'	8'1"	54	126	80	56	40	28	38	24	72
OLMSTED	520	26' x 20'	8'1"	12	36	35	14	10	14	16	12	24
JAMAICA POND	684	36' x 19'	8'1"	24	52	40	21	12	22	24	14	—
ARNOLD ARBORETUM	589	31' x 19'	8'1"	24	52	40	24	12	20	22	18	—
FRANKLIN	276	12' x 23'	8'1"	—	—	—	—	—	—	—	10	—
FOREST HILLS	392	14' x 28'	8'1"	—	—	—	—	—	—	—	14	—
OUTDOOR PATIO	3,080	40' x 77'	—	—	—	200	—	—	—	—	—	—

**SECOND FLOOR**



**THIRD FLOOR**



**ROOM DIMENSIONS AND SEATING CAPACITY — SECOND FLOOR**

Room Name	Square Feet	Dimensions	Height	Banquet			Reception	Classroom 3 per 6'	Classroom 2 per 6'	U-Shape
				Rounds of 10	Theater	Conference				
GRAND BALLROOM COMPLEX	19,938	—	—	1,790	2,100	—	3,000	—	—	—
GRAND, INDEPENDENCE & REPUBLIC	17,500	—	—	1,550	1,870	—	2,600	—	—	—
GRAND, LIBERTY & REPUBLIC	16,338	—	—	1,410	1,600	—	2,450	920	612	—
GRAND, LIBERTY & INDEPENDENCE	15,238	—	—	1,280	1,710	—	2,200	950	632	—
GRAND & INDEPENDENCE	12,924	—	—	1,080	1,503	—	2,000	745	462	—
GRAND & LIBERTY	11,638	—	—	1,030	1,250	—	1,440	660	440	—
GRAND & REPUBLIC	—	—	—	—	1,600	—	2,000	850	566	—
GRAND BALLROOM	9,324	111' x 84'	23'4"	850	1,092	—	1,200	550	350	—
GRAND PREFUNCTION	4,600	—	14'	—	—	—	1,000	—	—	—
REPUBLIC BALLROOM	4,700	100' x 47'	23'	360	430	—	600	250	172	—
REPUBLIC A	1,175	25' x 47'	23'	80	100	30	100	80	40	36
REPUBLIC B	3,525	75' x 47'	23'	240	300	60	400	170	132	62
REPUBLIC FOYER	2,000	40' x 50'	12'	—	—	—	350	—	—	—
INDEPENDENCE FOYER	840	35' x 24'	—	—	—	—	—	—	—	—
INDEPENDENCE BALLROOM	3,600	75' x 48'	12'10"	300	370	70	400	200	132	70
INDEPENDENCE EAST	1,248	26' x 48'	12'10"	80	120	36	140	60	40	35
INDEPENDENCE WEST	2,352	49' x 48'	12'10"	200	220	36	260	120	80	46
LIBERTY BALLROOM	2,314	89' x 26'	12'10"	180	217	—	240	125	72	—
LIBERTY A	780	30' x 26'	12'10"	60	62	24	80	36	22	24
LIBERTY B	806	31' x 26'	12'10"	60	62	25	80	36	22	24
LIBERTY C	806	31' x 26'	12'10"	60	62	26	80	34	—	24
BACK BAY BALLROOM	10,742	238' x 44'	11'	870	1,030	—	1,500	530	332	—
BACK BAY A	2,376	54' x 44'	11'	190	210	—	350	120	80	50
BACK BAY B	2,288	52' x 44'	11'	200	200	—	320	114	80	50
BACK BAY C	3,080	70' x 44'	11'	280	265	—	450	175	106	70
BACK BAY D	2,048	62' x 44'	11'	200	200	—	330	100	66	54
CONSTITUTION BALLROOM	6,254	118' x 53'	13'5"	600	720/600*	—	800	340	230	—
CONSTITUTION A	3,127	59' x 53'	13'5"	300	300	—	400	150	114	—
CONSTITUTION B	3,127	59' x 53'	13'5"	300	300	—	400	153	114	—

\*720 facing A/B / 600 facing balcony

**ROOM DIMENSIONS AND SEATING CAPACITY — THIRD FLOOR**

Room Name	Square Feet	Dimensions	Height	Rounds of 10	Theater	Conference	Reception	Classroom 3 per 6"	Classroom 2 per 6'	U-Shape
KENT	480	24' x 20'	9'	—	—	20	40	—	—	—
BOARDROOM	350	27' x 13'	8'	—	—	12	—	—	—	—
CONFERENCE ROOM	378	21' x 18'	9'	—	—	10	—	—	—	—
COMMONWEALTH	2,640	55' x 48'	9'	180	265	50	250	153	100	51
CLARENDON	560	20' x 28'	9'	50	45	18	50	27	16	27
CLARENDON A	280	20' x 14'	9'	20	21	12	25	12	12	—
CLARENDON B	280	20' x 14'	9'	20	21	12	25	12	12	—
DALTON	560	20' x 28'	9'	50	45	18	50	27	16	26
DALTON A	280	20' x 14'	9'	20	21	12	25	12	12	—
DALTON B	280	20' x 14'	9'	20	21	12	25	12	12	—
EXETER	560	20' x 28'	9'	50	45	18	50	28	16	26
EXETER A	280	20' x 14'	9'	20	21	12	25	12	12	—
EXETER B	280	20' x 14'	9'	20	21	12	25	12	12	—
BERKELEY	820	20' x 41'	9'	70	75	36	100	40	26	30
BERKELEY A	300	20' x 15'	9'	20	20	12	25	18	12	—
BERKELEY B	520	20' x 26'	9'	50	45	20	50	21	16	24
HAMPTON	936	26' x 36'	9'	90	100	30	100	43	26	35
HAMPTON A	468	26' x 18'	9'	40	40	20	50	24	16	15
HAMPTON B	468	26' x 18'	9'	40	40	20	50	24	16	15
GARDNER	1,344	28' x 48'	9'	110	120	36	100	75	50	41
GARDNER A	560	28' x 20'	9'	40	45	18	50	24	16	21
GARDNER B	784	28' x 28'	9'	60	55	18	80	30	20	26
FAIRFAX	2,350	50' x 47'	9'	180	220	—	220	110	72	35
FAIRFAX A	1,350	50' x 27'	9'	130	130	34	150	62	54	35
FAIRFAX B	1,000	50' x 20'	9'	60	80	32	60	36	32	20
BEACON A	648	27' x 24'	8'6"	40	50	20	50	27	20	20
BEACON B	720	30' x 24'	8'6"	40	50	20	50	27	20	20
BEACON C	408	24' x 17'	8'6"	—	—	12	—	—	—	—
BEACON D	682	31' x 22'	8'6"	40	50	20	50	27	20	20
BEACON E	630	30' x 21'	8'6"	40	50	20	50	27	20	20
BEACON F	660	30' x 22'	8'6"	40	50	20	50	27	20	20
BEACON G	660	30' x 22'	8'6"	40	50	20	50	27	20	20
BEACON H	660	30' x 24'	8'6"	40	50	20	50	27	20	20